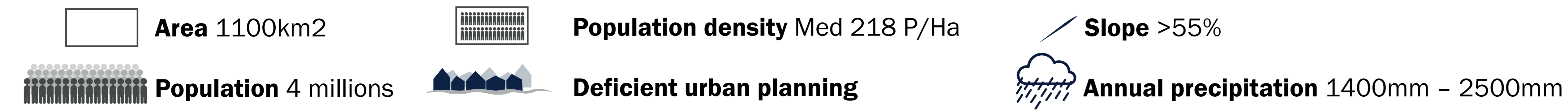


# Capacity-building strategies to improve the resilience of the community to extreme hydrometeorological events: The experience of the Medellín Early Warning System

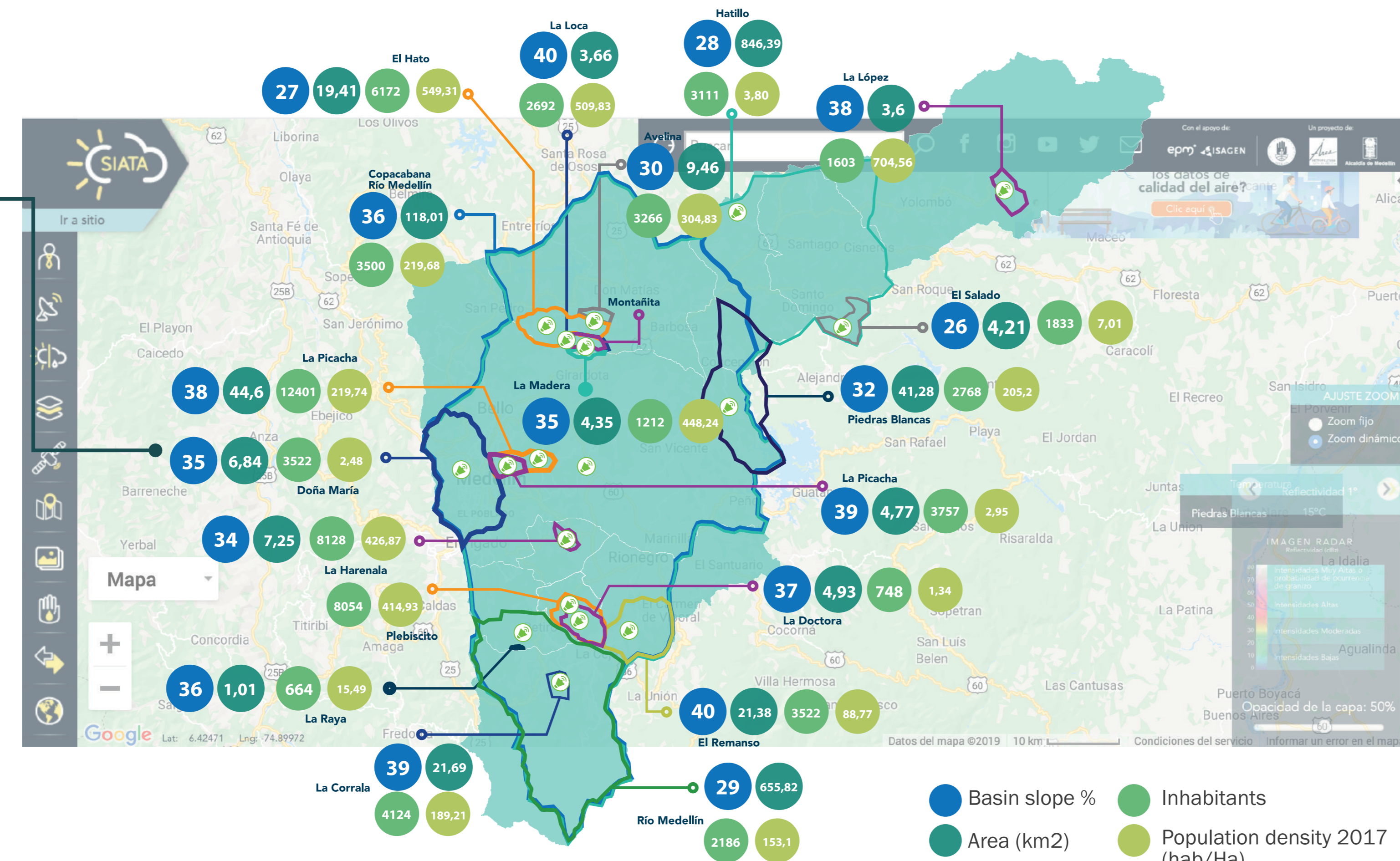


O. Ramírez<sup>1</sup>, Y. Cardona<sup>1</sup>, S. Yepes<sup>1</sup>, X. Rojas<sup>1</sup>, L. Mejía<sup>2</sup>, C. D. Hoyos<sup>1,3</sup>  
 1. Sistema de Alerta Temprana de Medellín y el Valle de Aburrá - SIATA  
 2. Área Metropolitana del Valle de Aburrá  
 3. Universidad Nacional de Colombia, Facultad de Minas, Departamento de Geociencias y Medio Ambiente

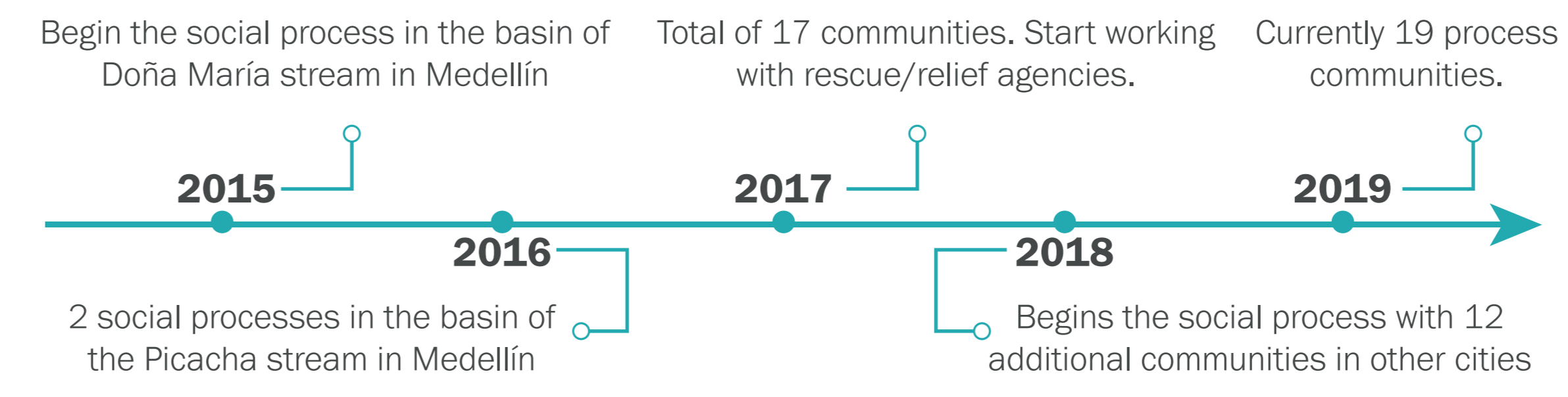
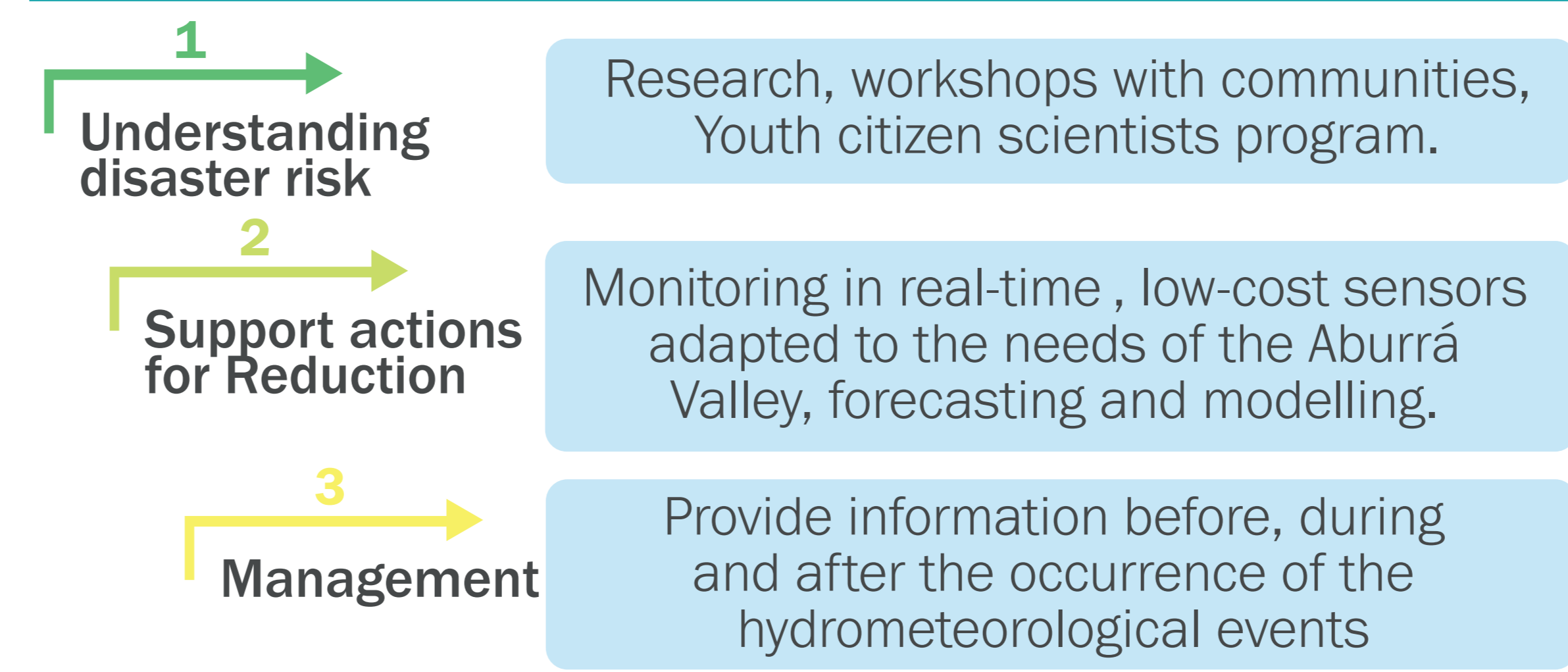
## The Aburrá Valley



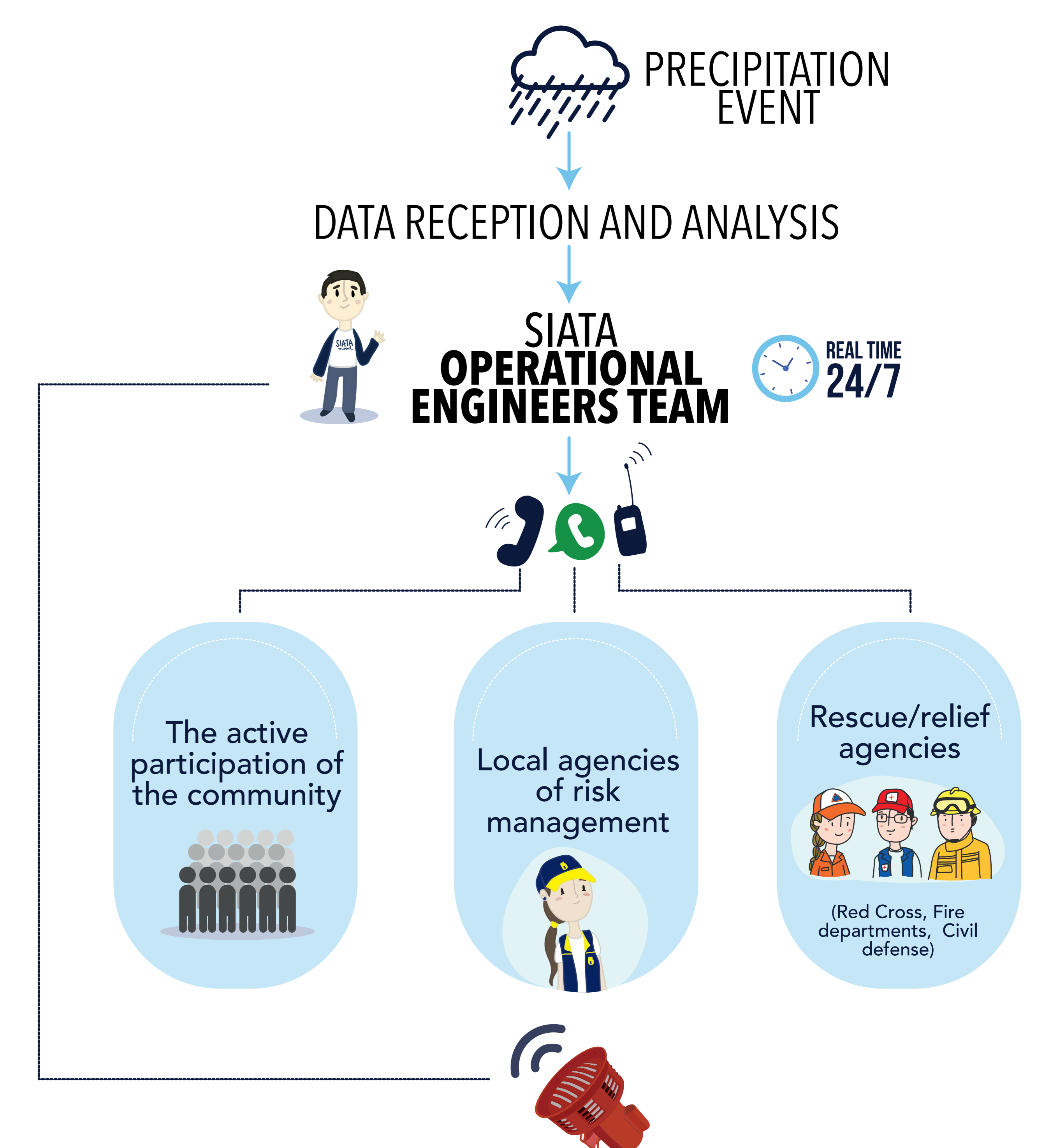
Observations and model projections suggest that extreme events are becoming more frequent in the region, increasing the level of hazard for vulnerable communities.



## SATC (Community Early Warning System)

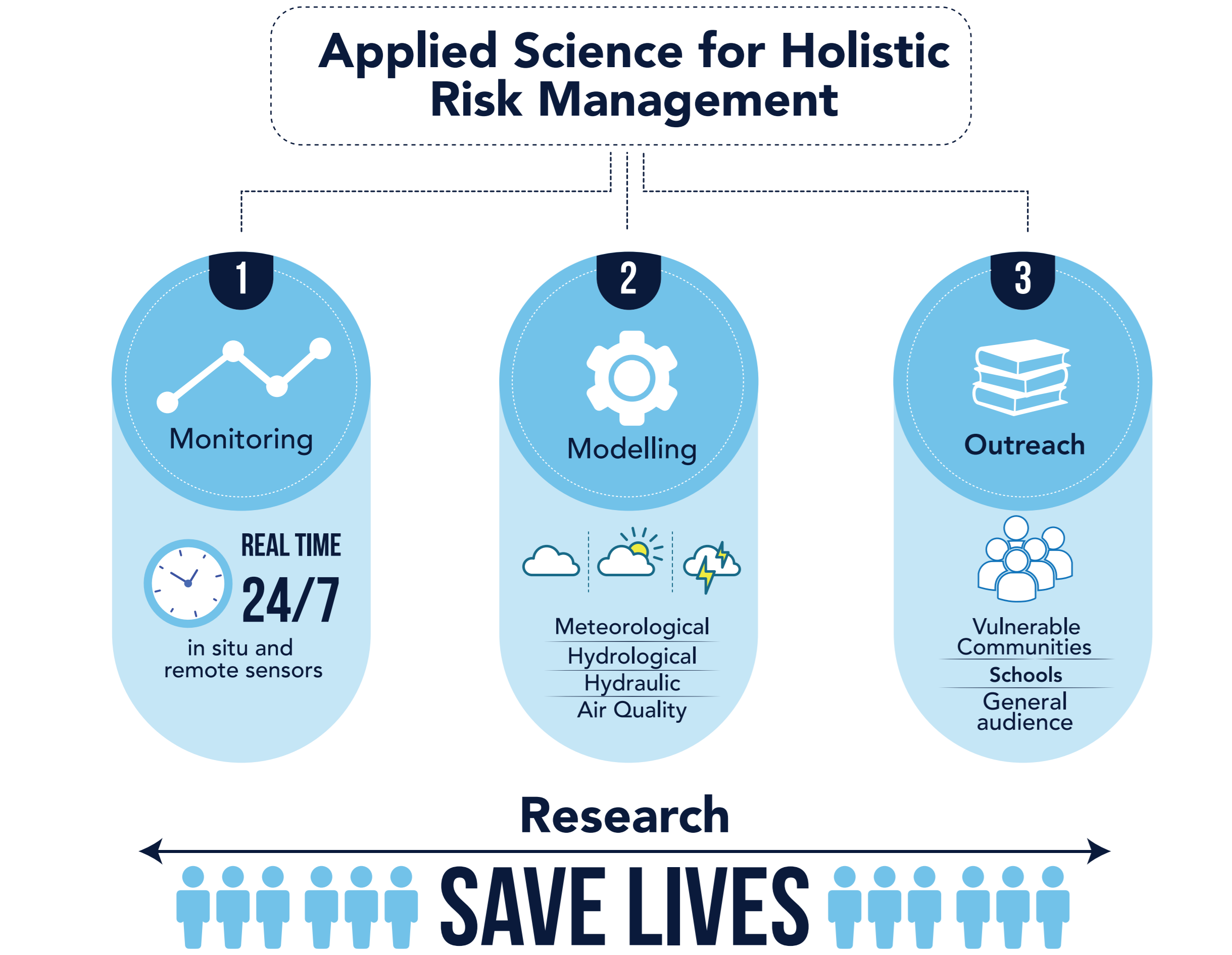


## How does it work?

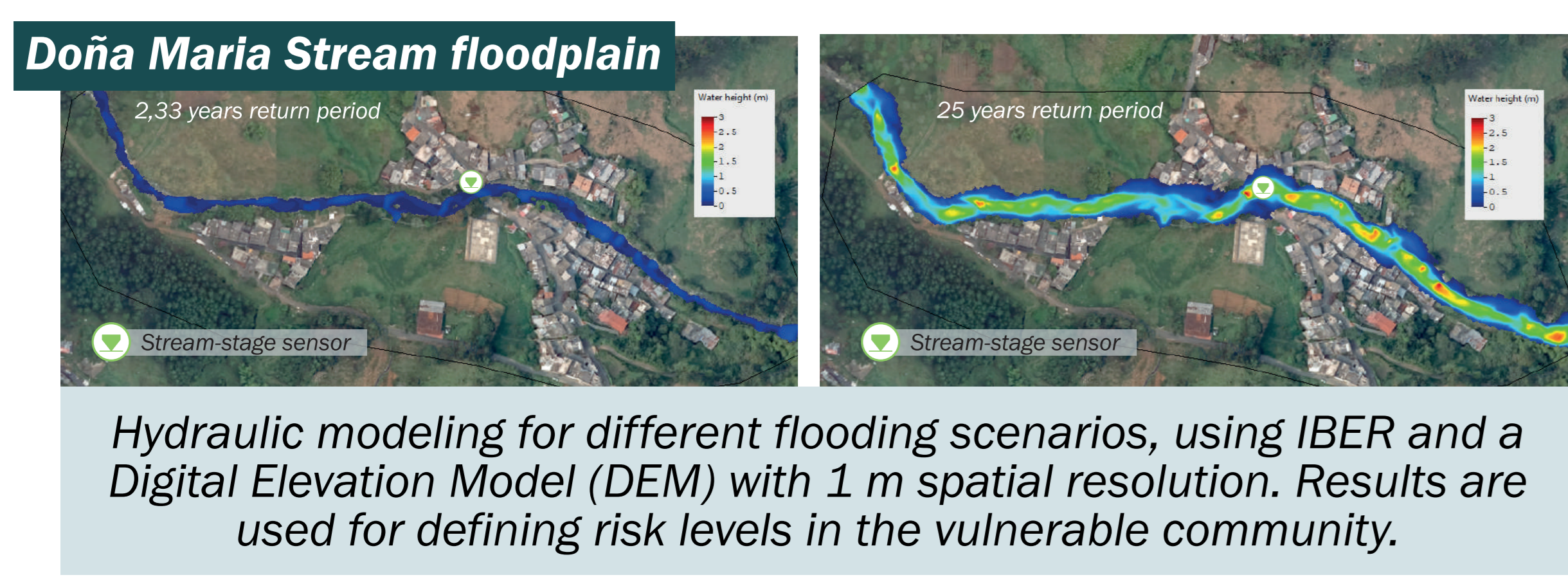
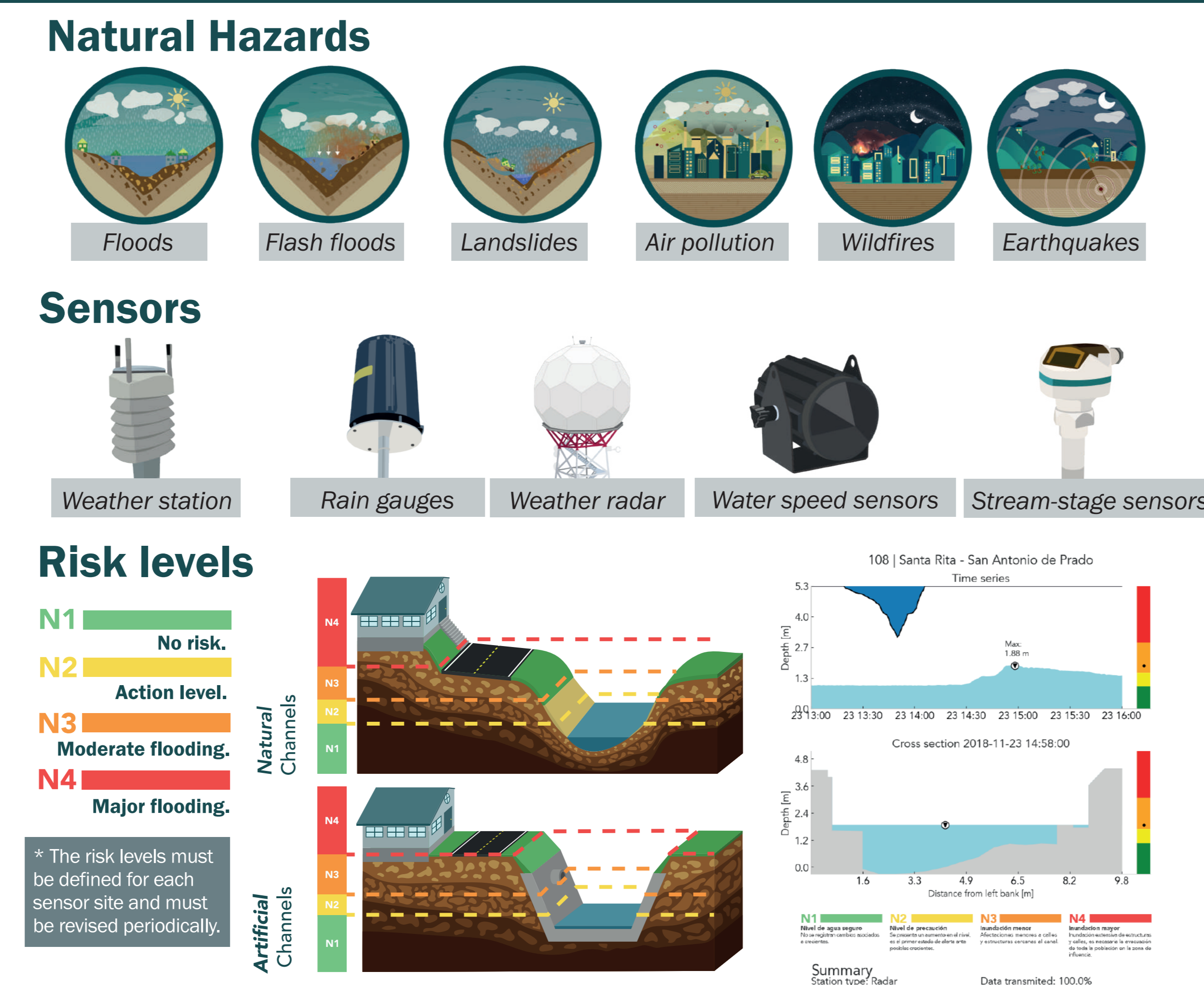


The interdisciplinary work allows us to improve the resilience of the community. **TO SAVE LIVES**

## SIATA (Early Warning System of Medellín and Aburrá Valley)



## Scientific data for risk management



## Phases of methodology



## Lessons learned

- The methodologies and strategies must be adapted to each group.
- Articulation between SIATA and local agencies of risk management is key for an effective response.
- Communities empowered with the risk management of their neighborhood.
- The most effective processes are those requested by the community.

## Acknowledgements

This work was supported by Area Metropolitana de Medellín y de Valle de Aburrá, Municipio de Medellín, Grupo EPM, and ISAGEN under the contract CCT504 of 2019.

**Contact**  
 Name: Olga Ramirez  
 email contact: olgaramirez.siata@gmail.com

