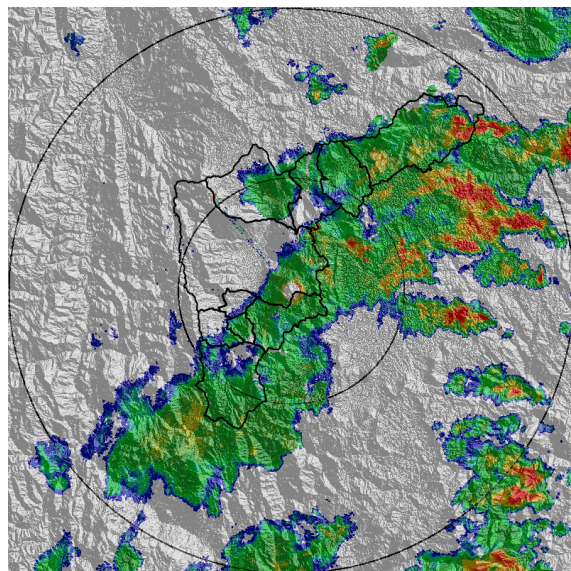
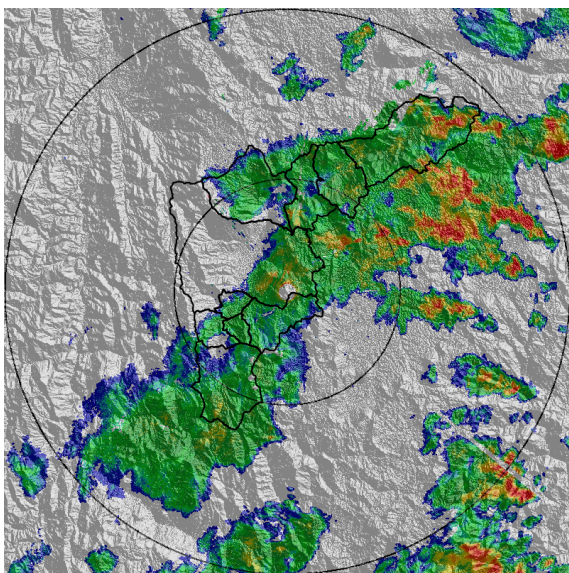


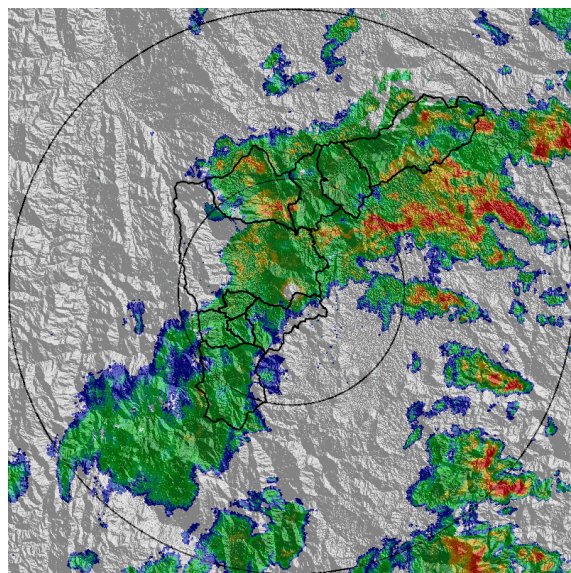
(a) 2015-05-31 23:33



(b) 2015-05-31 23:57



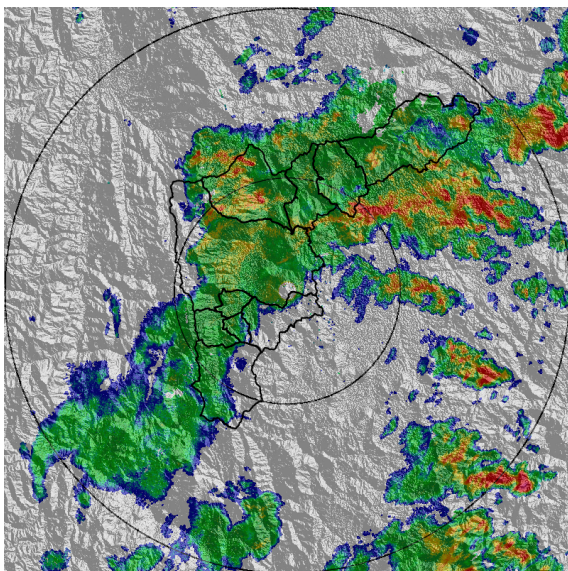
(c) 2015-06-01 00:03



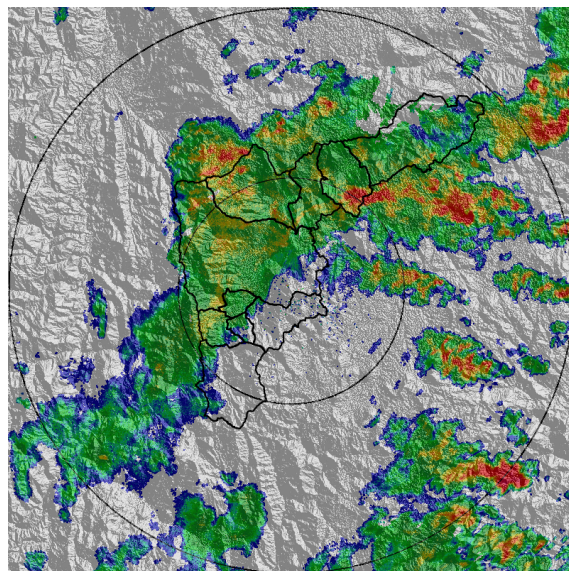
(d) 2015-06-01 00:09



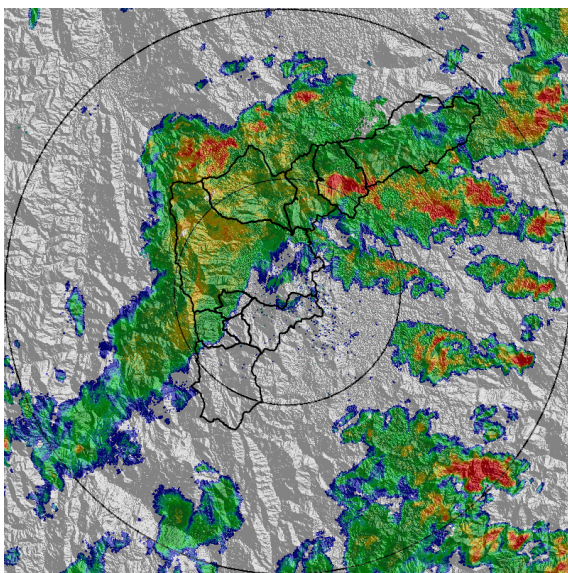




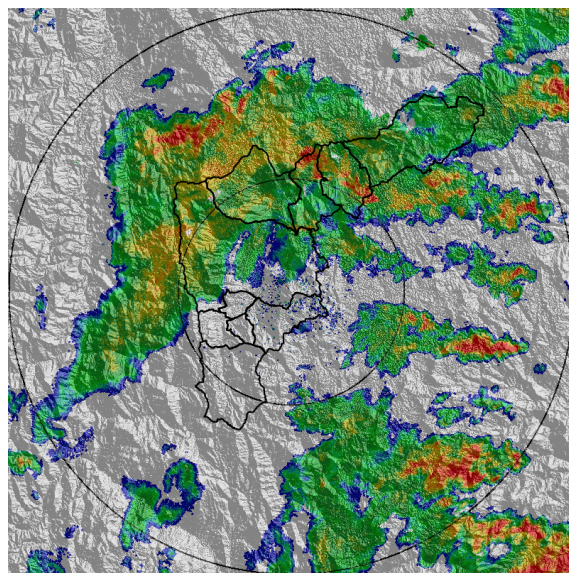
(e) 2015-06-01 00:15



(f) 2015-06-01 00:21



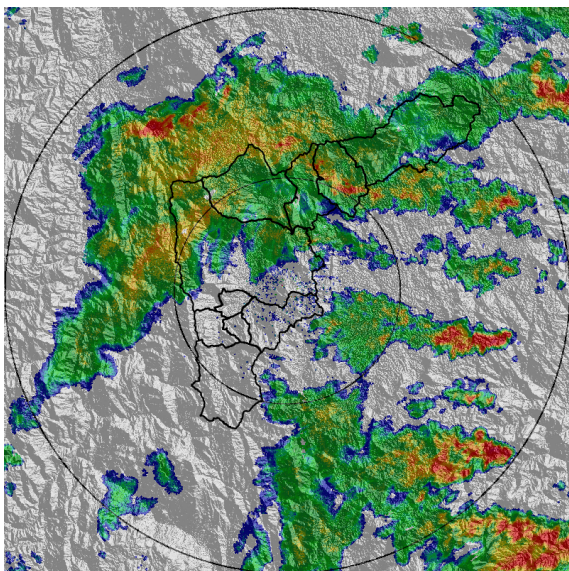
(g) 2015-06-01 00:27



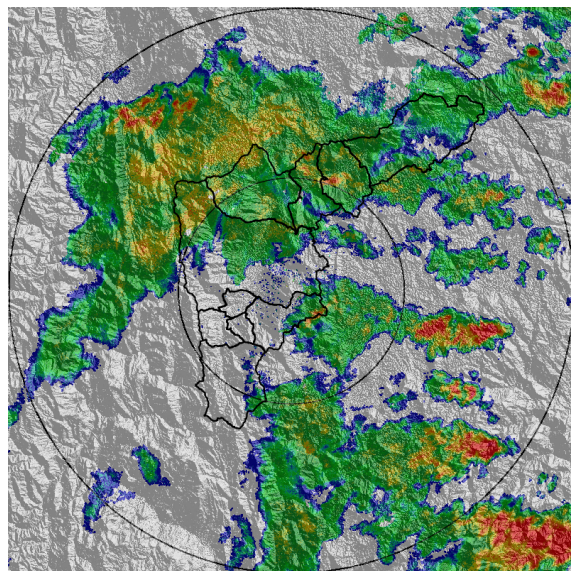
(h) 2015-06-01 00:39



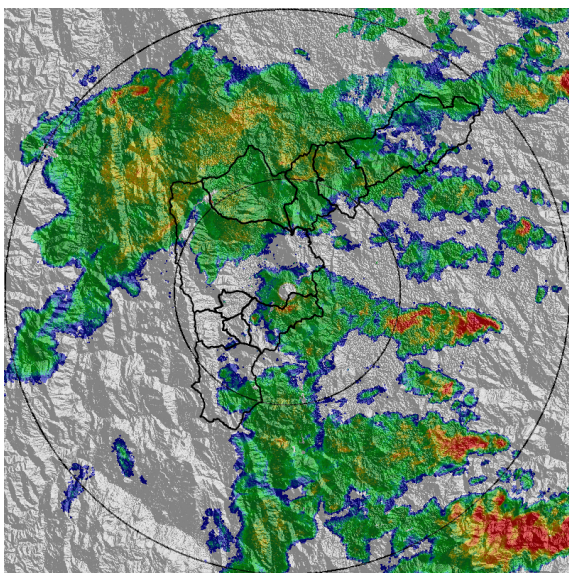




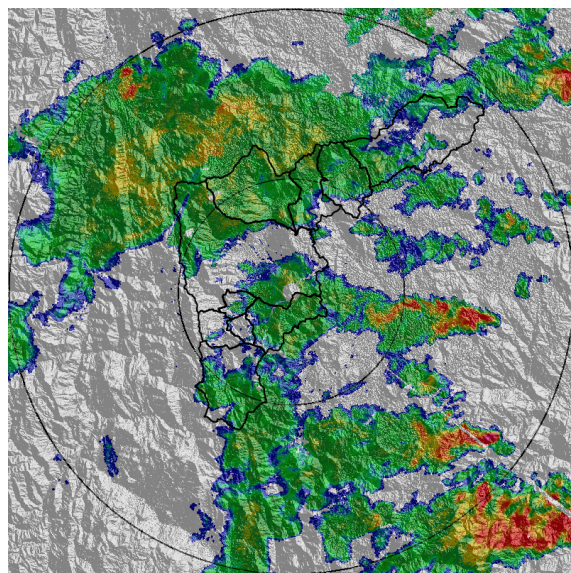
(i) 2015-06-01 00:46



(j) 2015-06-01 00:52



(k) 2015-06-01 00:58



(l) 2015-06-01 01:04

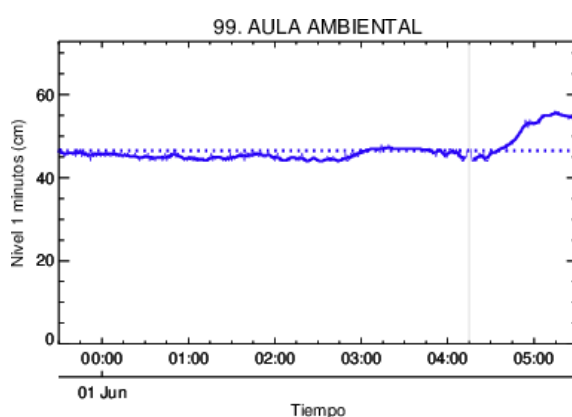




## Resumen registros de nivel

Estación	Ubicación	Banca llena (cm)	Nivel base medio (cm)	Pico de la hidrografa (cm)	Hora	% de Banca llena
93. Puente 33	Medellin - 10 La Candelaria	170	64.0	86.0	05:28:08	50.59
99. Aula Ambiental	Medellin - 07 Robledo	330	44.0	56.0	05:14:53	16.97

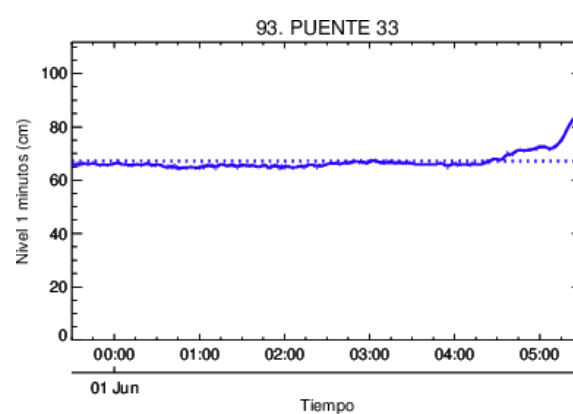
## Gráficas series de nivel



Estacion de Nivel tipo Radar. Nivel de Banca Llena: 17.0 %  
 Resolucion temporal: 1 minutos  
 % Datos transmitidos\*: N1 - 99.7  
 Nivel Promedio en datos disponibles : N1 - 46.5 (cm)  
 \*Calidad de datos aun sin verificar exhaustivamente

— Nivel Sensor Nivel 1  
 ..... Promedio Sensor Nivel 1

(m) Aula Ambiental

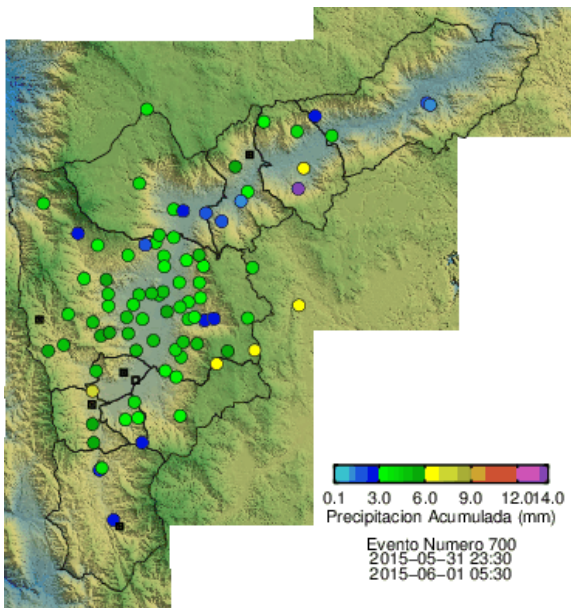


Estacion de Nivel tipo Radar. Nivel de Banca Llena: 50.6 %  
 Resolucion temporal: 1 minutos  
 % Datos transmitidos\*: N1 - 100.0  
 Nivel Promedio en datos disponibles : N1 - 67.1 (cm)  
 \*Calidad de datos aun sin verificar exhaustivamente

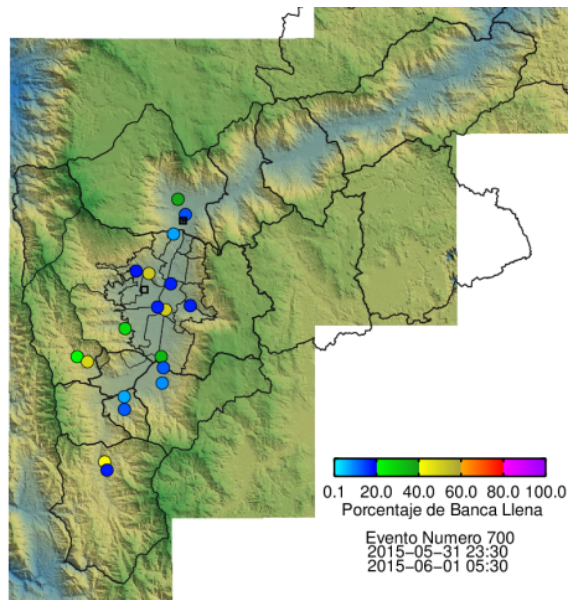
— Nivel Sensor Nivel 1  
 ..... Promedio Sensor Nivel 1

(n) Puente 33





(ñ) Boletin Precipitacion



(o) Boletin Nivel

Elaborado por: Esneider Zapata  
Área Operacional  
Sistema de Alerta Temprana  
[www.siat.gov.co](http://www.siat.gov.co) / @siatamedellin  
Teléfono: 4341987 - 4341993

