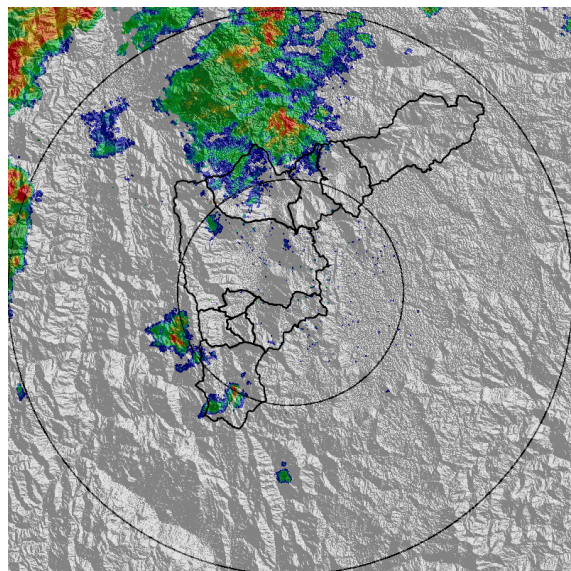
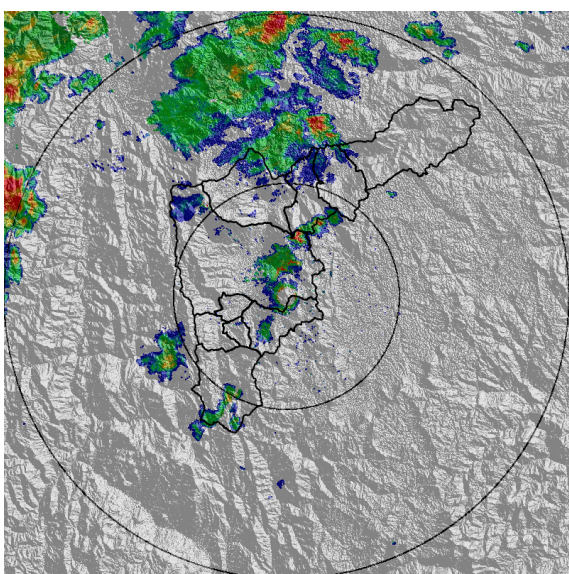


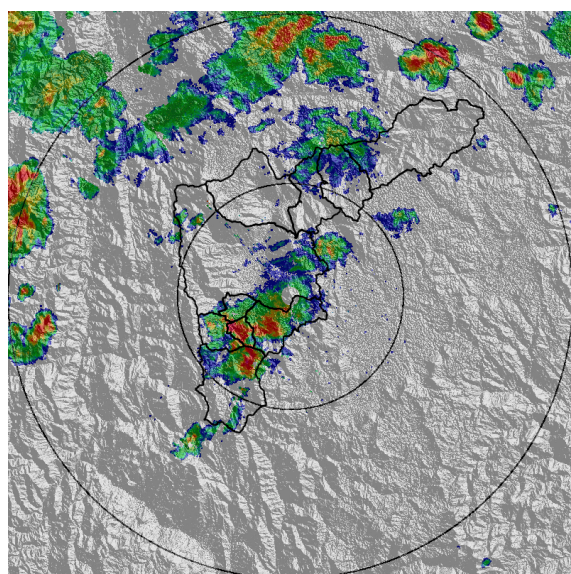
(a) 2016-04-02 13:33



(b) 2016-04-02 14:47

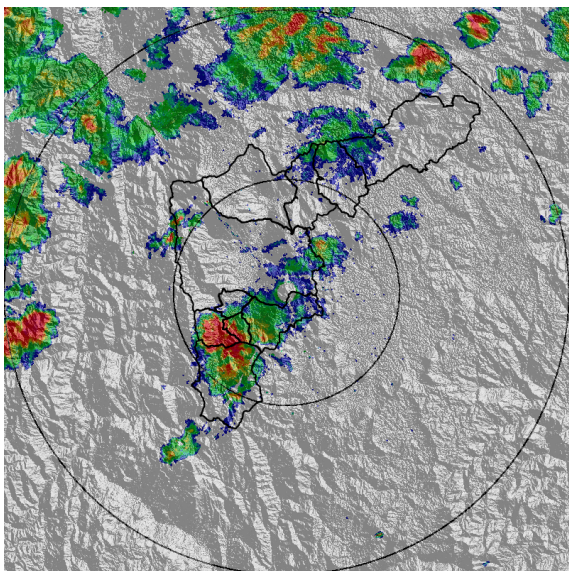


(c) 2016-04-02 14:59

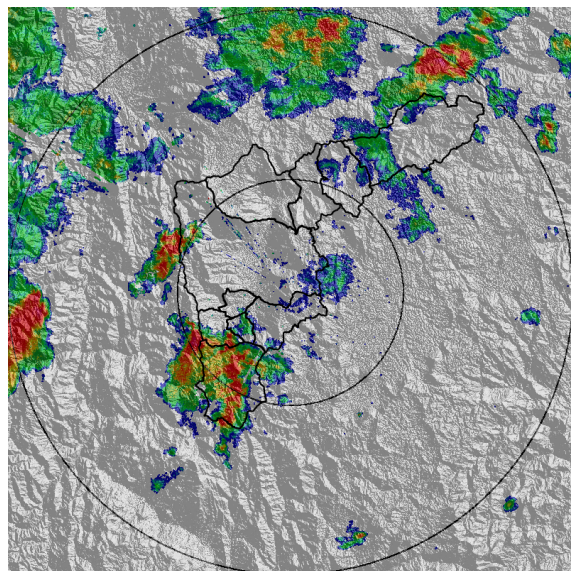


(d) 2016-04-02 15:24

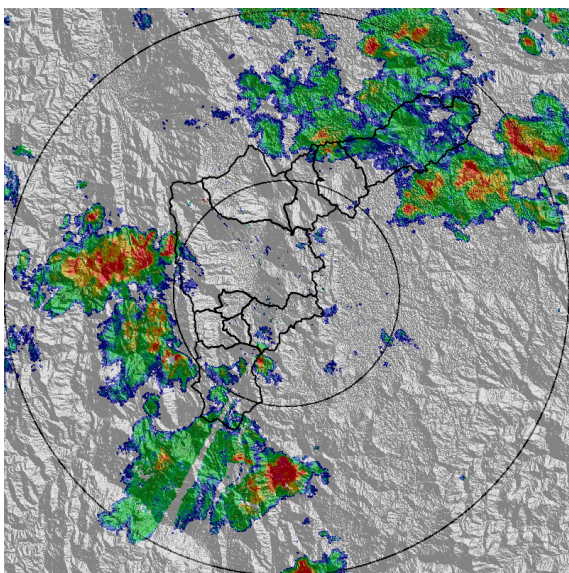




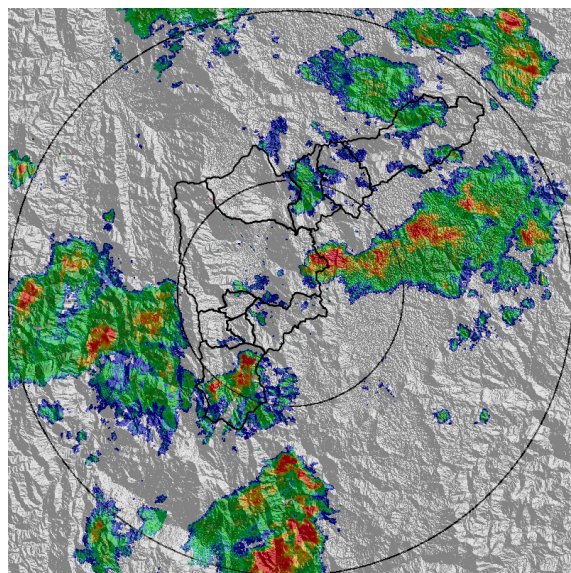
(e) 2016-04-02 15:30



(f) 2016-04-02 15:48

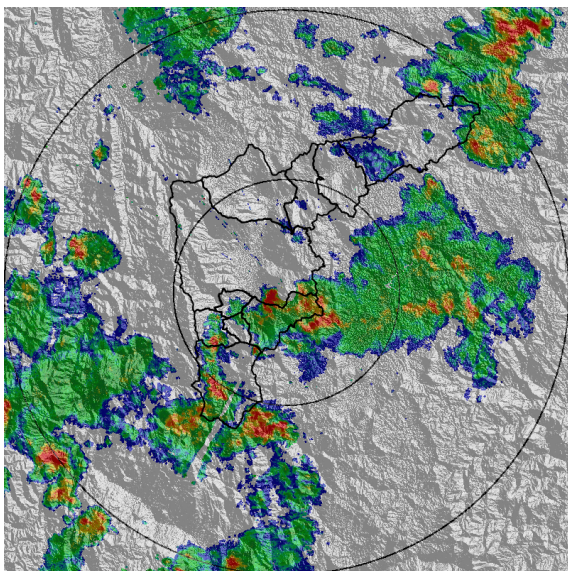


(g) 2016-04-02 16:56

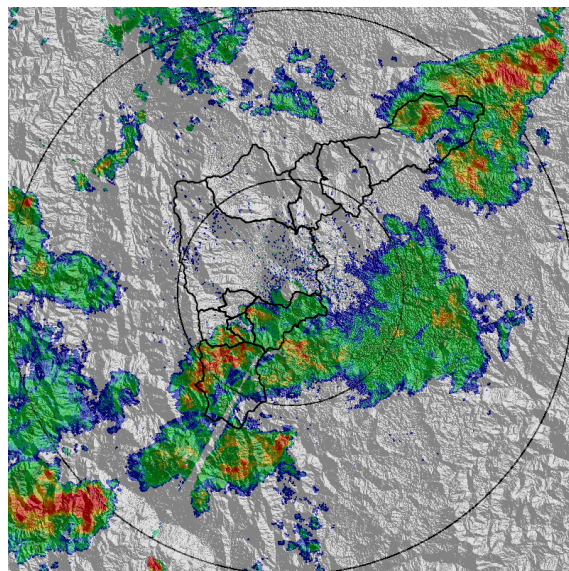


(h) 2016-04-02 17:39

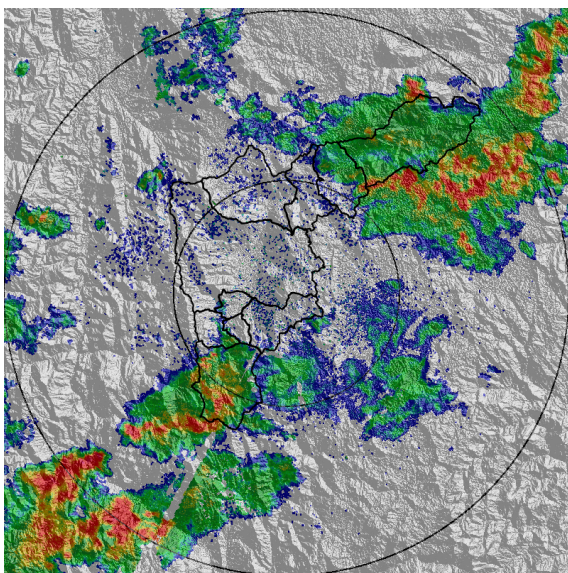




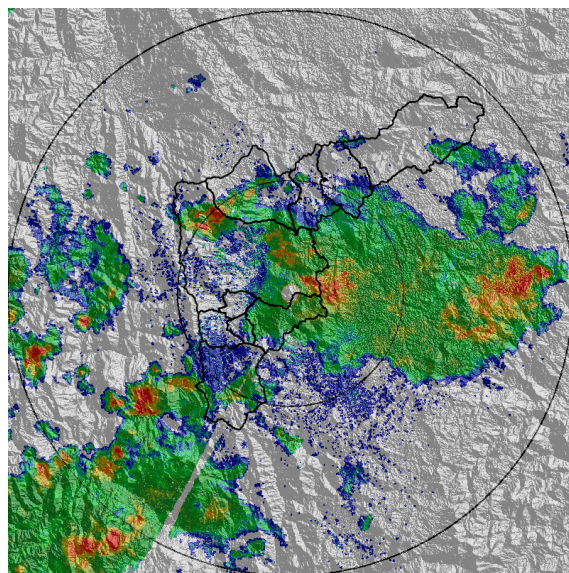
(i) 2016-04-02 18:17



(j) 2016-04-02 18:48



(k) 2016-04-02 19:25

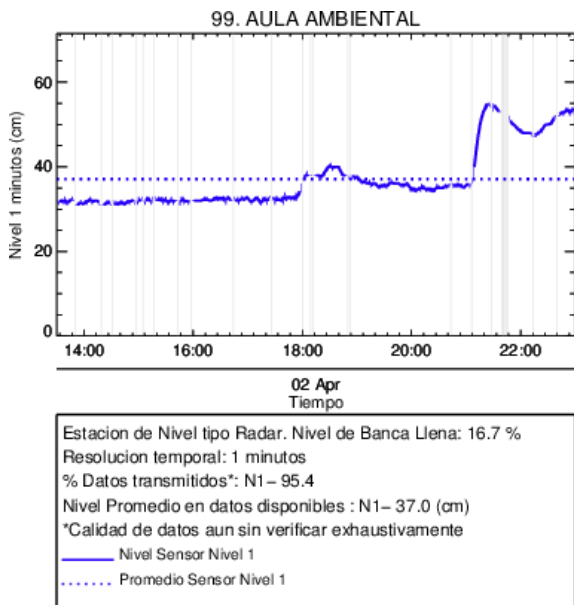


(l) 2016-04-02 20:45

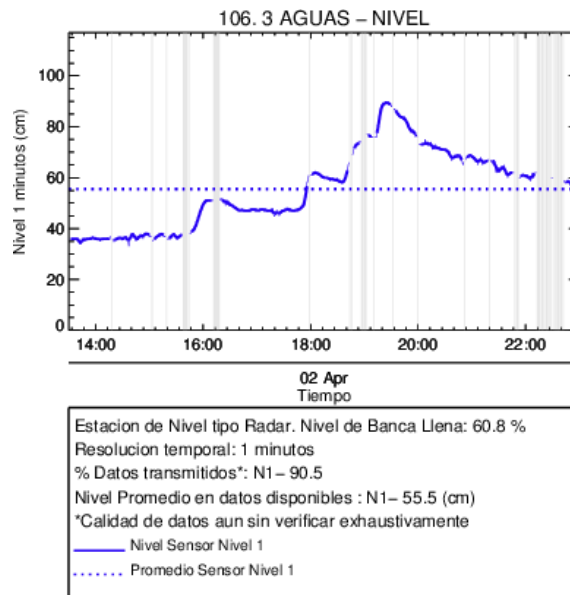


RESUMEN DE REGISTROS DE NIVEL						
Estación	Ubicación	Banca llena (cm)	Nivel base medio (cm)	Pico de la hidrografa (cm)	Hora	% de banca llena
91. Estacion Metro Sabaneta	Sabaneta - Sabaneta	450	7.0	46.0	13:30:04	10.22
93. Puente 33	Medellin - 10 La Candelaria	170	53.0	81.0	13:30:25	47.65
99. Aula Ambiental	Medellin - 07 Robledo	330	31.0	55.0	13:30:38	16.67
106. 3 Aguas - Nivel	Caldas - La Miel	148	33.0	90.0	13:30:23	60.81

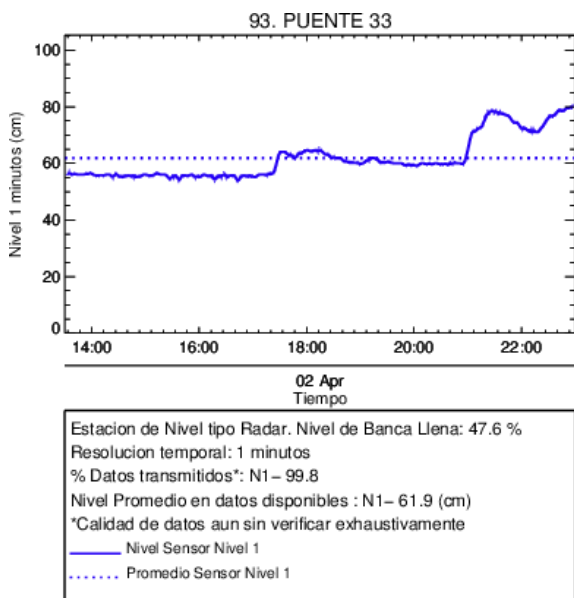




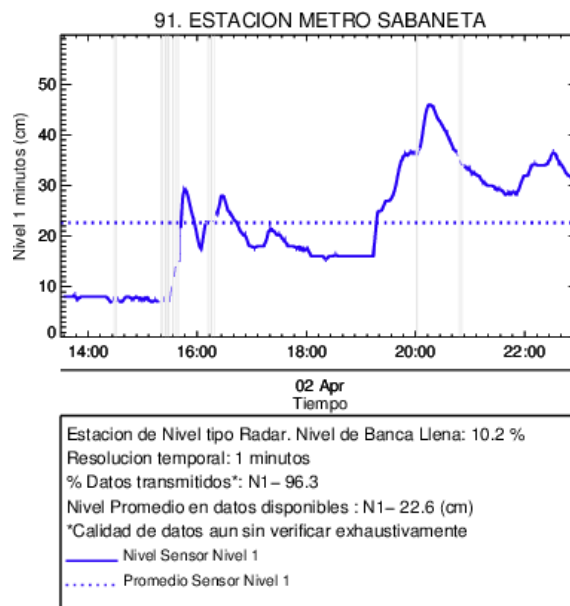
(m) Aula Ambiental



(n)

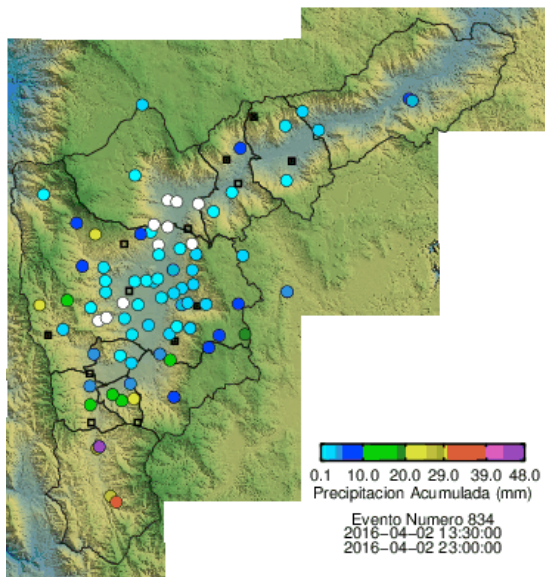


(o) Puente 33

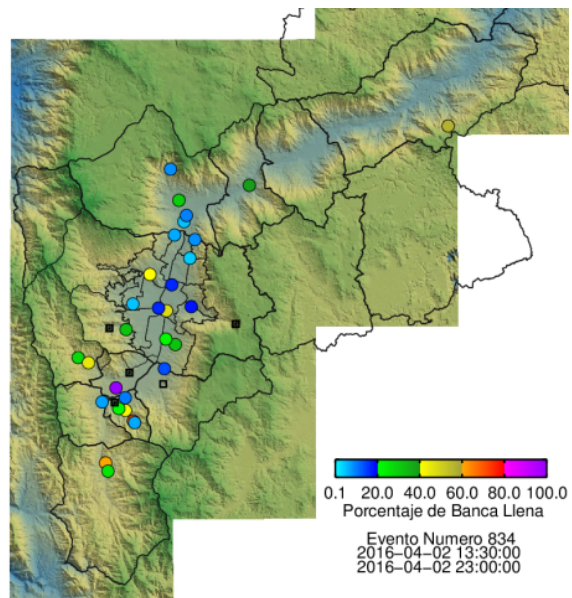


(p) Estacion Metro Sabaneta





(q) Boletin Precipitacion



(r) Boletin Nivel

Elaborado por: Yazmin Eliana Urrego Lezcano  
 Área Operacional  
 Sistema de Alerta Temprana  
[www.siat.gov.co](http://www.siat.gov.co) / @siatamedellin  
 Teléfono: 4341987 - 4341993

