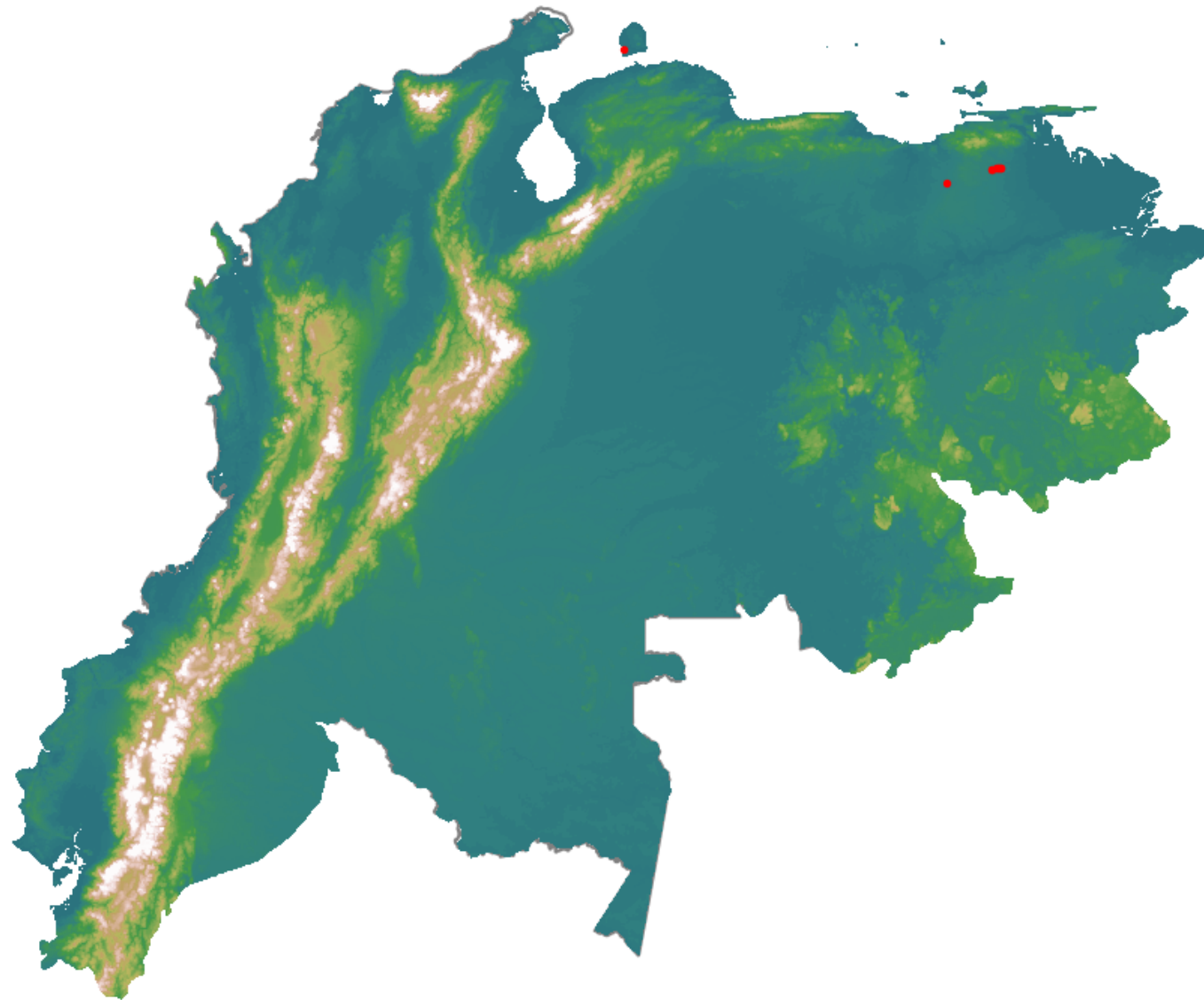


Anomalías térmicas e incendios - MODIS Terra

Probabilidad superior a 95% de ser un incendio

Mapa últimas 48 horas 2021-05-07



Conteo total: 10

Distribución

| | |
|----------------|--------|
| Col Amazonía: | 0.0% |
| Col Andina: | 0.0% |
| Col Caribe: | 0.0% |
| Col Orinoquia: | 0.0% |
| Col Pacífico: | 0.0% |
| Ecuador: | 0.0% |
| Venezuela: | 100.0% |